

Goulburn North Public School Discipline Policy

Goulburn North Public School is committed to a positive approach to student discipline. Practices aim to foster student engagement in learning, set clear boundaries, recognise appropriate behaviour and manage inappropriate behaviour fairly.

The *Student Discipline in Government Schools Policy* is reflected in this policy.

The following DoE policies and procedures underpin the Goulburn North Public School Discipline Policy:

Core Rules in NSW Government School

Values in NSW Public Schools

Bullying of Students – Prevention and Response Policy
School Attendance Policy

School Uniform Policy

Suspension and Expulsion of Students – Procedures

Anti-Racism Policy

Work Health and Safety Policy

Goulburn North Public School Core Values

Respect

Responsibility

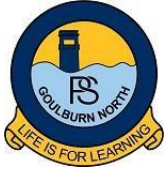
Co-operation

At Goulburn North Public School we are committed to providing safe, supportive and responsive learning environments for everyone. We teach and model the behaviours we value in our students.

Students are expected to:

- Respect other students, their teachers and school staff and community members
- Follow school and class rules and follow the directions of their teachers
- Strive for the highest standards in learning
- Respect all members of the community and show courtesy to all students, teachers and community members
- Resolve conflict respectfully, calmly and fairly
- Comply with the school's uniform policy or dress code
- Attend school every day (unless legally excused)
- Respect all property
- Not be violent or bring weapons, illegal drugs, alcohol or tobacco into our schools
- Not bully, harass, intimidate or discriminate against anyone in our schools

This policy was reviewed in August, 2020.



Goulburn North Public School Discipline Policy

Strategies and Practices to Promote Positive Behaviour

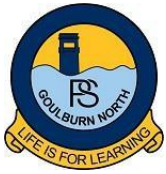
Within the level of resources available, Goulburn North Public School will provide a program of learning appropriate to each child's needs and abilities and, where possible, provide support programs for those students experiencing difficulty.

The Learning Support Team (LST) consists of the principal, assistant principals, school counsellor, Learning and Support Teacher (LaST). The role of the LST is to problem solve individual student's needs. Students can be referred to the LST by their teacher, parent or self-referred. The LST determines whether additional assessments need to be made, whether allocation of teacher support for learning or social skills is appropriate, develops behaviour risk assessments and behaviour plans when necessary, develops behaviour support plans for the classroom or playground, evaluates educational programs, supports individual teachers to meet the learning needs of a student, and can assist in referring students (through their parents) to outside agencies.

Other programs run throughout the school year to support positive behaviour and to remediate inappropriate behaviour. They include the Positive Behaviour for Learning (PBL) program, Bounce Back Social Skills program and Child Protection program.

Wellbeing contributes to making Goulburn North Public School a safe, effective teaching and learning environment that enables our students to be healthy, happy, successful and productive. PBL addresses the diverse needs of our students socially as well as academically. We use data to drive interventions and to determine our schools social needs. Students are explicitly taught what is expected of them in all school settings through ongoing PBL lessons written explicitly to address current needs (refer to Figures 1, 2 and 32).

In line with the Department of Education's policies Goulburn North Public School aims to enhance effective teaching and learning by encouraging students to take responsibility for their own learning and behaviour, catering for the individual learning needs of students, establishing well-managed teaching and learning environments and providing opportunities for parents to discuss their child's progress.



Goulburn North Public School Discipline Policy

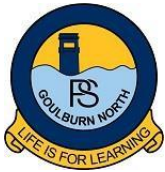
Recognition of Positive Behaviour and Student Achievement

Students who demonstrate respect, responsibility and co-operation can receive a 'free and frequent' ticket. Free and frequents are collected by the classroom teacher where they may contribute to a class award system. The free and frequents are collected in each classroom and each class then combines their total to other classes at Friday assemblies. The whole school total is combined weekly to reach a goal. The whole school is rewarded through an activities day when the goal is reached.

Students are also able to earn Conduct Awards, Honour Ribbons and Certificates of Conduct.

10 Conduct Awards	=	Honour Ribbon
3 Honour Ribbons	=	Bronze Conduct Certificate 6
Honour Ribbons	=	Silver Conduct Certificate 9
Honour Ribbons	=	Gold Conduct Certificate

Conduct Awards can be presented to students at any time. All other ribbons and awards are presented to students at Friday assemblies.

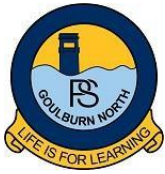


Goulburn North Public School Discipline Policy

		POSITIVE	
		RESPECT RESPONSIBILITY CO-OPERATION	
		TEACHER ACTIONS	
CLASSROOM	MINORS	<ul style="list-style-type: none"> Establishing Expectations Explicit Instruction Waiting and Scanning Proximity Control Cueing with parallel acknowledgement 	<ul style="list-style-type: none"> Descriptive Encouraging Working with Peers Giving Choice Redirect Reteach Non Verbal Cues Record on EBS to Monitor
	MAJORS	<ul style="list-style-type: none"> Buddy Referral System Work it Out Sheet Complete work during Break Parent Contact Classroom Monitoring Record on EBS 	<ul style="list-style-type: none"> Free and Frequent Opportunities to Model Behaviour Ment Awards Positive Verbal Feedback Conduct Awards
PLAYGROUND	MINORS	<ul style="list-style-type: none"> Proximity Control Student Conference Giving Choice Redirect Reteach PBL Expectations Signal Non Verbal Cues Record on EBS to Monitor 	<ul style="list-style-type: none"> Shadowing Loss of Privileges Break Space Parent Contact PBL Expectations Lessons Check in Exec - Work it Out Sheet Record on EBS
	MAJORS	<ul style="list-style-type: none"> Loss of Privileges Detention Behaviour Management Plan Parent Meeting 	
EXEC MANAGED	STUDENTS WITH THREE OR MORE MAJORS ON EBS IN A FORTNIGHT <ul style="list-style-type: none"> LMBR Data Management Monitoring Card Parent/Carer notification LST Referral 		
PRINCIPAL	<ul style="list-style-type: none"> Risk Assessment In School Suspension Short Suspension PBL Management Outside Agencies Parent/Carer involvement 		



Goulburn North PS acknowledges and celebrates respectful, responsible and co-operative behaviours



Goulburn North Public School Discipline Policy



At Goulburn North we acknowledge and celebrate behaviours that are **Respectful, Responsible and Cooperative**

Response to ALL behaviour problems is:
calm, consistent, brief, immediate, respectful and private.

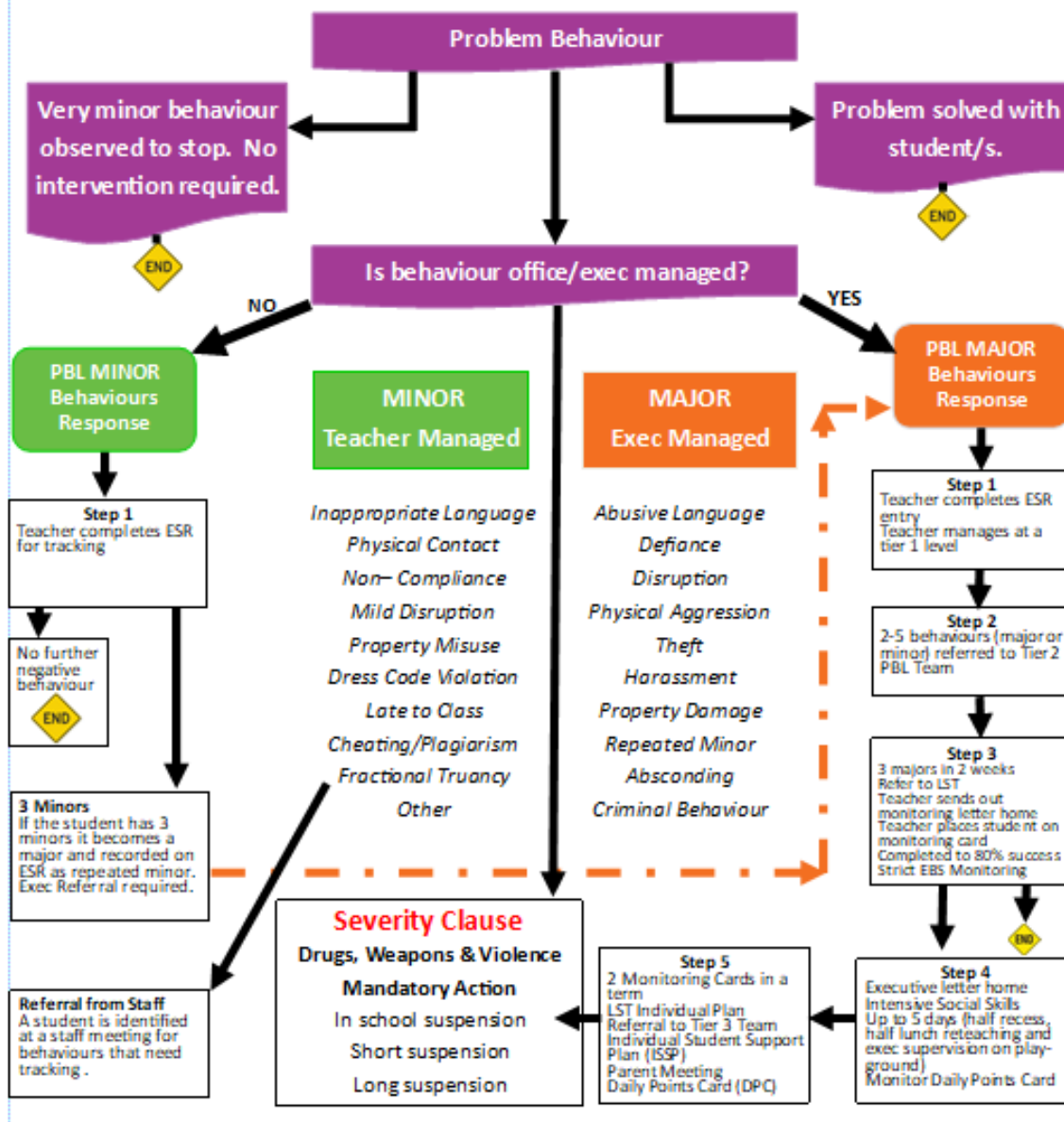


Fig 2

This policy was reviewed in August, 2020.



Tier 2 Referral Process

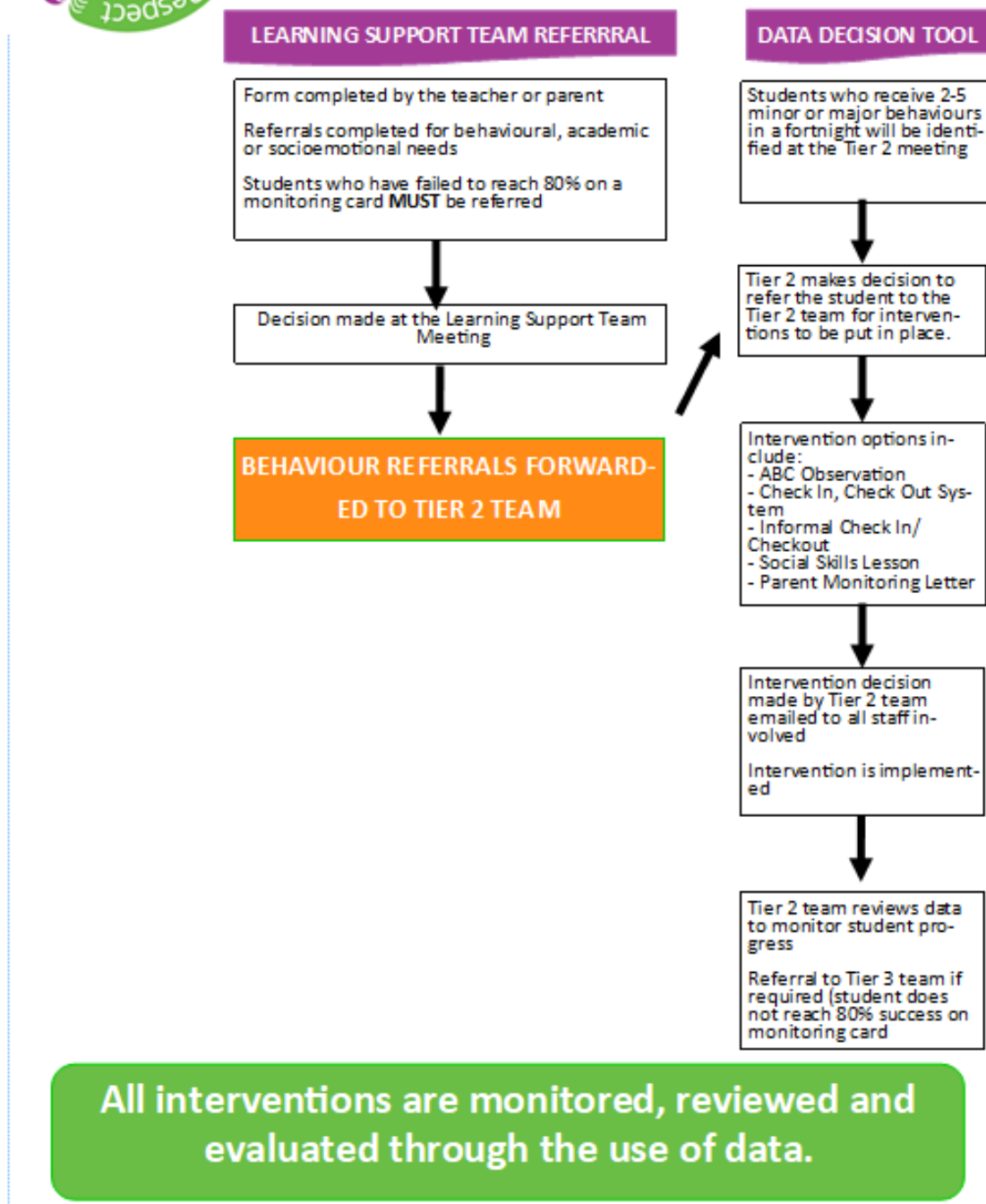


Fig 3